

## General

VAHLE Festoon Systems support conductor cables (flat or round) and hoses (hydraulic and pneumatic applications) for delivering power and control to mobile equipment in a safe, efficient and maintenance free method.

The cable carriers are well guided inside their □-tracks and protected against humidity, dust and icing.

All box-tracks can be bent in accordance to the system layout, considering the minimum bending radii and the permissible cable loops.

VAHLE cable carriers contained in this catalog comply with the VDE and most international regulations.

The use of flatform cable is highly recommended due to better bending properties compared to round cable. The minimum bending radius permissible for round cable is 5 times the cable diameter – for flat cable it is 5 times the thickness of the cable. This formula allows considerably smaller bend radii for flat cable, minimizing the required Festoon System storage distance which is normally within the length of equipment (e. g. hoist trolley – see page 4).

VAHLE cable carriers not only deliver power and control to mobile equipment which has reciprocal motion but also support large quantities of data cables including optic fibres travelling independently from the mobile machinery. The relevant control carriers with and without push button lifting are also shown in this catalog.

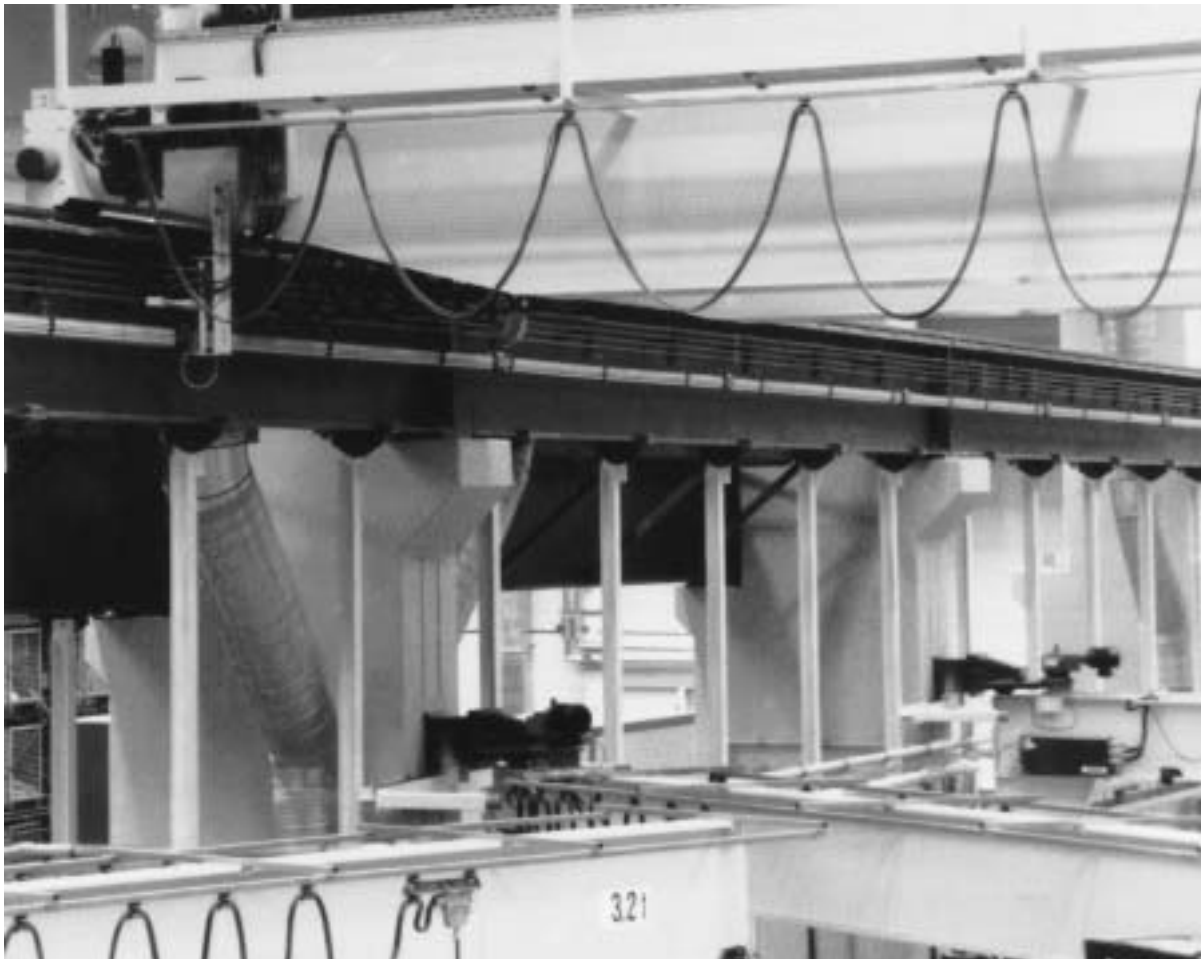
## Layout

Selection of the proper carriers and components must be based on the choosen cable (see our catalog 8L – Conductor Cables and Fittings) or hose data that meets your electrical and mechanical requirements.

Refer to the pages 46 – 48 or send us the completed Questionnaire on page 4. Prints or sketches for system layouts including curves would be appreciated whenever obtainable.

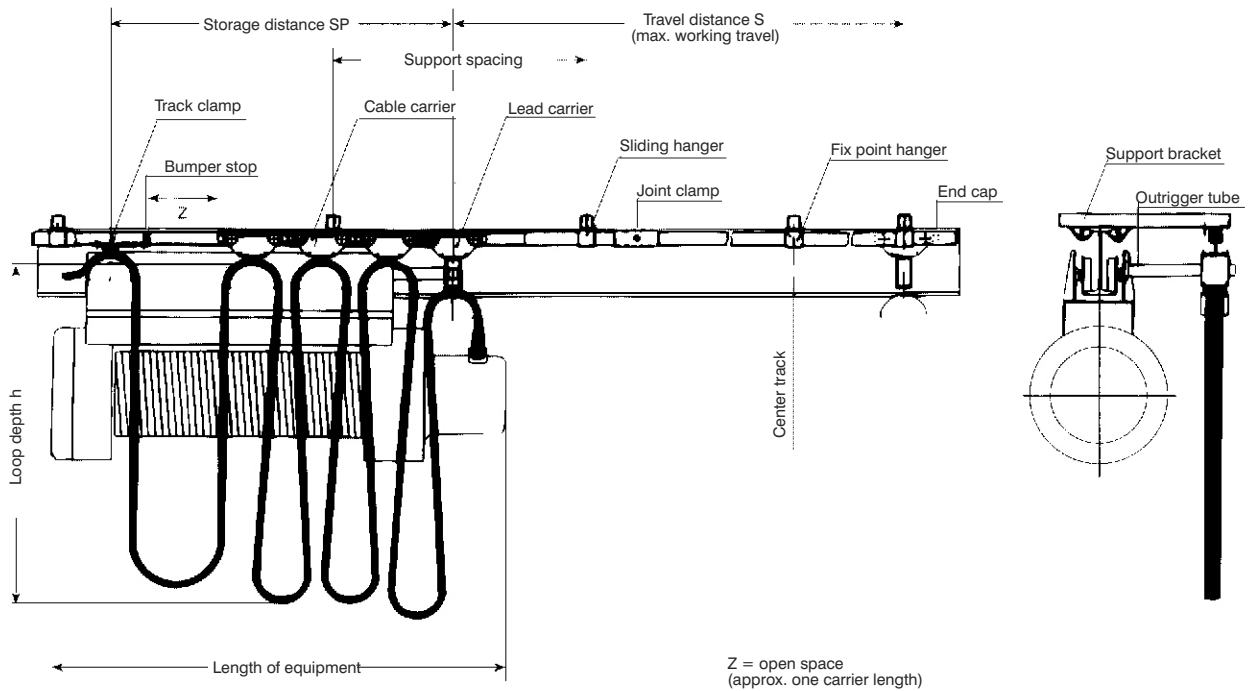
For extra heavy duty or arduous applications it is recommended to check in our catalogs 8b F & R for our Innovative Festoon Technology on I-Beam tracks or 8c for Festoon Systems on diamond◊shaped tracks.

In any case we welcome your inquiries and guarantee our prompt quotations.





# QUESTIONNAIRE



Name and Address of Customer: \_\_\_\_\_

Ref.: \_\_\_\_\_

1. Type of Application: \_\_\_\_\_

2. Outdoors      Indoors      \_\_\_\_\_

3. Temperature range \_\_\_\_\_ °C min. \_\_\_\_\_ °C max. \_\_\_\_\_

4. Is round or flatform cable envisaged? \_\_\_\_\_

5. How much space is available for storage? SP = \_\_\_\_\_ m

6. Is it possible to extend the track for the festoon cable system in case the length of equipment is insufficient for storage space?

Yes, by \_\_\_\_\_ m;      no, not possible.

7. Special operating conditions: \_\_\_\_\_

8. Length of equipment: \_\_\_\_\_ m

9. Travel distance: S = \_\_\_\_\_ m

10. Travel speed: V = \_\_\_\_\_ m/min

11. Acceleration: a = \_\_\_\_\_ m/sec

12. Max loop depth: h = \_\_\_\_\_ m

13. Hookup cable length required at Track clamp side:  $l_E$  = \_\_\_\_\_ m

14. Hookup cable length required at Lead carrier side:  $l_M$  = \_\_\_\_\_ m

### 15. Required cables:

No. of cables	No. & Size of conductors	cable OD Ø/mm	width x thickness of flatform cables