



NEW PRODUCT

CONDUCTOR RAIL CLEANING DEVICE

ARG 18 ES
ARG 14 ES

VAHLE 
ELECTRIFICATION SYSTEMS



GENERAL INFORMATION

The cleaning device Model ARG 18 ES cleans conductor rails with a conductor spacing of 18 mm (VKS; U15) and Model ARG 14 ES rails with a conductor spacing of 14 mm (U10) automatically and preventive from dust deposits.

The cleaning device consists of an industrial vacuum cleaner (230 V) with suction hose and a suction head equipped according to the number of poles/conductors.

Cleaning elements are installed to collectors instead of carbon brushes.

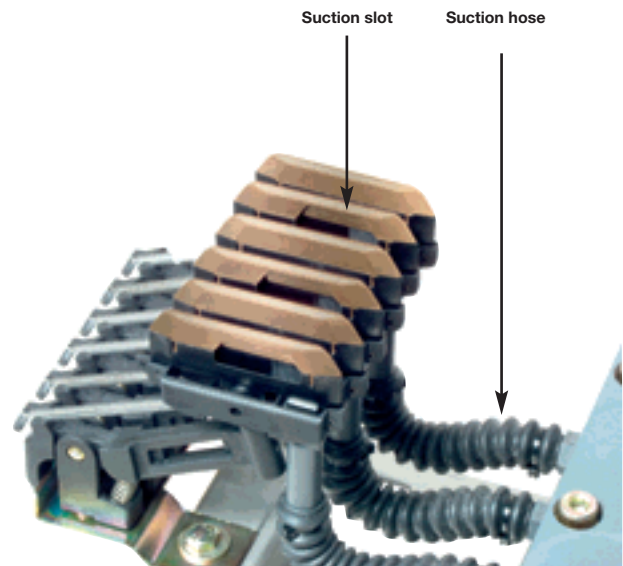
Technical data

Power:	1200 W
Operating voltage:	230 V
Air throughput:	36 Litres/sec.
Vacuum:	20 kPa
Main filter surface:	2100 cm ²
Dust bag capacity:	6.25 Litres
Weight:	5 kg

Cleaning device,

complete with suction head piece

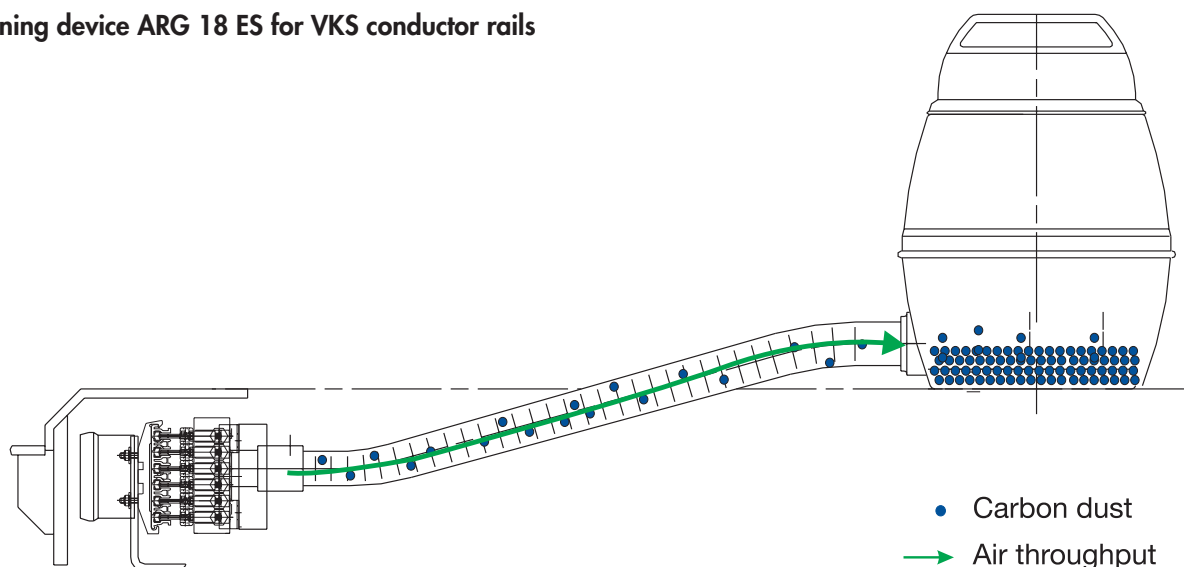
Model ⁽¹⁾	Powerrail/ conductor rail	Number of poles	suit funnel EFT - KSFU 25	Order No.
ARG 18-4 ES/T	VKS; U 15	4	yes	156 965
ARG 18-4 ES	VKS; U 15	4	no	156 966
ARG 18-6 ES/T	VKS; U 15	6	yes	156 894
ARG 18-6 ES	VKS; U 15	6	no	156 950
ARG 18-7 ES	VKS; U 15	7	no	156 967
ARG 18-8 ES	VKS; U 15	8	no	156 968
ARG 14-4 ES/T	U 10	4	yes	142 613
ARG 14-4 ES	U 10	4	no	142 614
ARG 14-6 ES/T	U 10	6	yes	142 611
ARG 14-6 ES	U 10	6	no	142 612
ARG 14-7 ES	U 10	7	no	142 615
ARG 14-8 ES	U 10	8	no	142 616



Spare parts

Model	Order No.
Suction hose	156 987

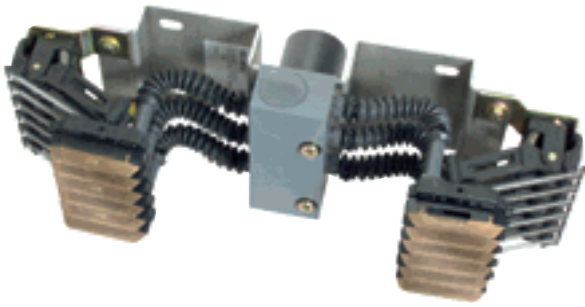
Cleaning device ARG 18 ES for VKS conductor rails



⁽¹⁾ The suffix of the model designation states the number of poles (e.g. ARG 14 - 6 R 6 poles/conductors).
 The designation ES denotes a single current collector.
 The designation 14 (18) denotes the conductor spacing.
 Version T is designed for use with a funnel.



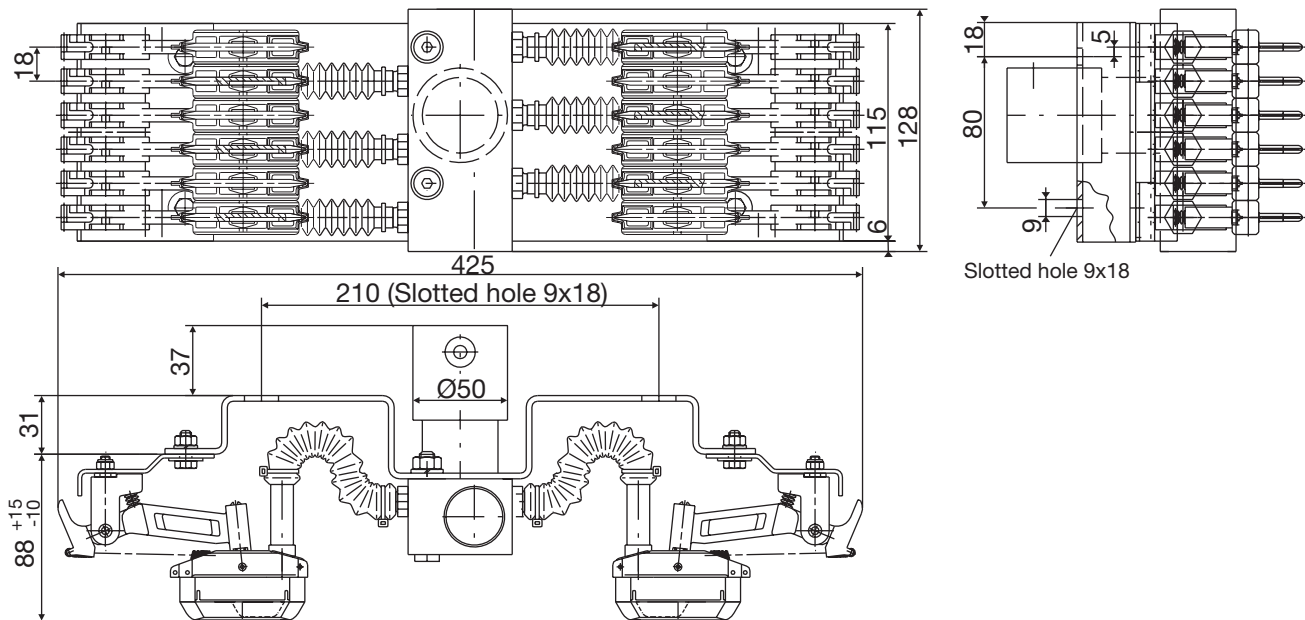
Suction head



Suction head (separate):

Designation ⁽¹⁾	Number poles	suits funnel EFT - KSFU 2	Order No. of
Suction head for ARG 18 - 4 ES/T	4	yes	156 961
Suction head for ARG 18 - 4 ES	4	no	156 962
Suction head for ARG 18 - 6 ES/T	6	yes	156 893
Suction head for ARG 18 - 6 ES	6	no	156 951
Suction head for ARG 18 - 7 ES	7	no	156 963
Suction head for ARG 18 - 8 ES	8	no	156 964
Suction head for ARG 14 - 4 ES/T	4	yes	142 602
Suction head for ARG 14 - 4 ES	4	no	142 608
Suction head for ARG 14 - 6 ES/T	6	yes	142 605
Suction head for ARG 14 - 6 ES	6	no	142 606
Suction head for ARG 14 - 7 ES	7	no	142 609
Suction head for ARG 14 - 8 ES	8	no	142 610

Example: ARG 18 - 6 ES/T



⁽¹⁾ The suffix of the model designation states the number of poles (e.g. ARG 14 - 6 → 6 poles/conductors).
 The designation ES denotes a single current collector.
 The designation 14 (18) denotes the conductor spacing.
 Version T is designed for use with a funnel.



ACCESSORIES

The compact conductor rail cleaners are available for the same number of conductors as the compact current collectors. They are arranged pair by pair, left and right.

In version T, conductor rail cleaners and current collectors are installed alternating to ensure free movement of the suction hoses and to ensure proper entry into the funnel EFT.

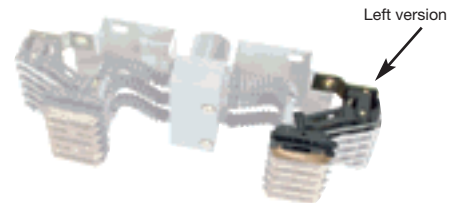
The conductor rail cleaners have cleaning elements instead of carbon brushes. Cleaning elements must **not** be used for current collection for safety reasons.

Compact rail cleaners



Model	Version	No. of poles	suits funnel	Order No.
ARFU 18 - 4/T	left	4	yes	156 969
ARFU 18 - 4/T	right	4	yes	156 973
ARFU 18 - 4/T	left	4	no	156 970
ARFU 18 - 4	right	4	no	156 974
ARFU 18 - 6/T	left	6	yes	156 895
ARFU 18 - 6/T	right	6	yes	156 896
ARFU 18 - 6	left	6	no	156 952
ARFU 18 - 6	right	6	no	156 953
ARFU 18 - 7	left	7	no	156 971
ARFU 18 - 7	right	7	no	156 975
ARFU 18 - 8	left	8	no	156 972
ARFU 18 - 8	right	8	no	156 976
ARFU 14 - 4/T	left	4	yes	168 334
ARFU 14 - 4/T	right	4	yes	168 346
ARFU 14 - 4	left	4	no	168 347
ARFU 14 - 4	right	4	no	168 348
ARFU 14 - 6/T	left	6	yes	168 349
ARFU 14 - 6/T	right	6	yes	168 350
ARFU 14 - 6	left	6	no	168 351
ARFU 14 - 6	right	6	no	168 352
ARFU 14 - 7	left	7	no	168 353
ARFU 14 - 7	right	7	no	168 354
ARFU 14 - 8	left	8	no	168 355
ARFU 14 - 8	right	8	no	168 356

Conductor rail cleaner (single)



Model	Order No.
for ARG 18 ES	
ARFU 25, version right (with suction slot)	156 898
ARFU 25, version left (with suction slot)	156 897
KSFU 25 PH (without suction slot)	155 025
for ARG 14 ES	
RUFU 25, version right (with suction slot)	168 345
RFU 25, version left (with suction slot)	168 335
KFU 25 PH (without suction slot)	168 015

Carbon brushes (single)



Model	Order No.
for ARG 18 ES	
ARKU 25/18, version right (with suction slot)	156 986
ARKU 25/18, version left (with suction slot)	156 985
KMKU 25/18	155 002
for ARG 14 ES	
ARKU 25/14, version right (with suction slot)	168 360
ARKU 25/14, version left (with suction slot)	168 359
KMKU 25/14	168 000

Safety instructions:

- ▶ **Caution when handling live parts!**
Carbon dust is conductive and may cause short circuits!
- ▶ **On heavily soiled systems, the filter bag (inside the filter housing) needs to be replaced at short intervals!**
- ▶ **Do not inhale carbon dust!**
- ▶ **Filter bags must not be shaken out but must be disposed!**



PAUL VAHLE GMBH & CO. KG

Westicker Str. 52 • D 59174 KAMEN/GERMANY
TEL. (+49) 23 07/70 40 • FAX (+49) 23 07/70 44 44
Internet: www.vahle.de • e-mail: postmaster@vahle.de