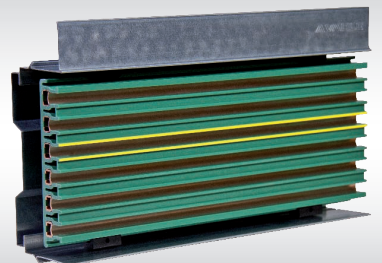
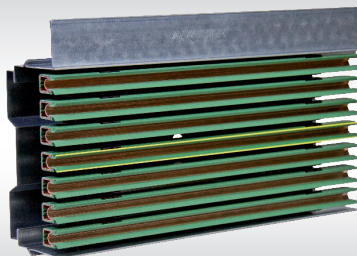
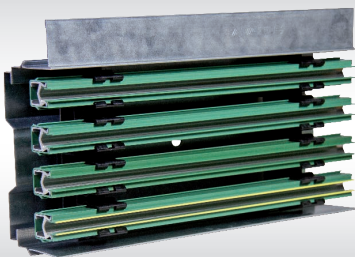


**VAHLE**

## Multi Support Profile VMT

**SYSTEMS IN MOTION**



## Content

The VAHLE solution for automation .....	2	Joint splice for feed .....	5
Technical data .....	3	Potential equalization .....	5
System layout .....	3	Installation tools .....	5
VMT - Multi Support Profile .....	4	VAHLE Conductor systems for VMT .....	6
Joint clamp.....	4	Conductor system hangers for VMT .....	6
Suspension hangers.....	4	Compact collector set SA-KEH 100 .....	6

## The VAHLE solution for automation

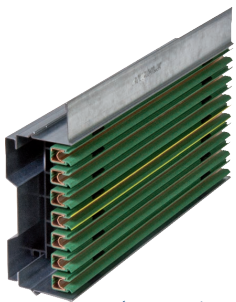
The all new VAHLE Multi Support Profile VMT has been specifically designed to meet the highly diverse requirements of automated storage and retrieval installations, as well as material handling, conveying, or factory automation applications.

VMT facilitates uncomplicated, fast installation of several VAHLE conductor and positioning systems. VMT allows a large support distance which reduces mounting component cost and improves installation times.

## System Specifics

- Can be used with several VAHLE conductor systems
- Can be mounted in two orientations - "face out" or "face down"
- Plug-in and clamping connection technology enables unprecedented fast installation
- Provides impact protection for conductor system
- Temperature fluctuations will not influence system's rigidity
- Integration of VAHLE positioning systems
- Attachment hangers for all commonly used rack upright profiles
- 4 to 7 conductors
- 60 to 400 A
- Same profile regardless of conductor system
- Touch proof rated per IP 23
- Electrically safe with potential equalization
- Simple and quick exchange of profile sections or subsections

## Possible System Variants

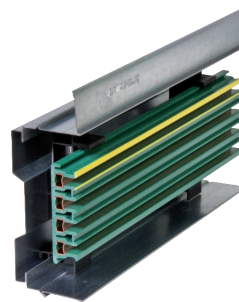


(Face out orientation)

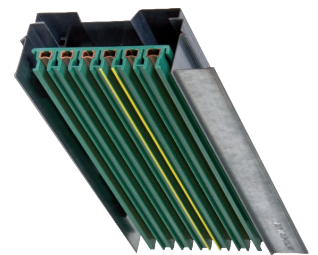
U15  
Catalog 2c



U25  
Catalog 2c



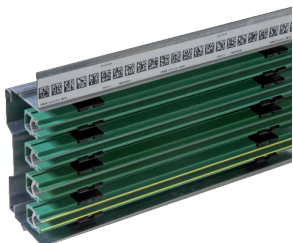
VKS4  
Catalog 3b



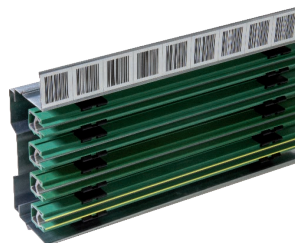
(Face down orientation)

VKS6  
Catalog 3b

## Accessory Components



Data matrix tape



Bar code tape

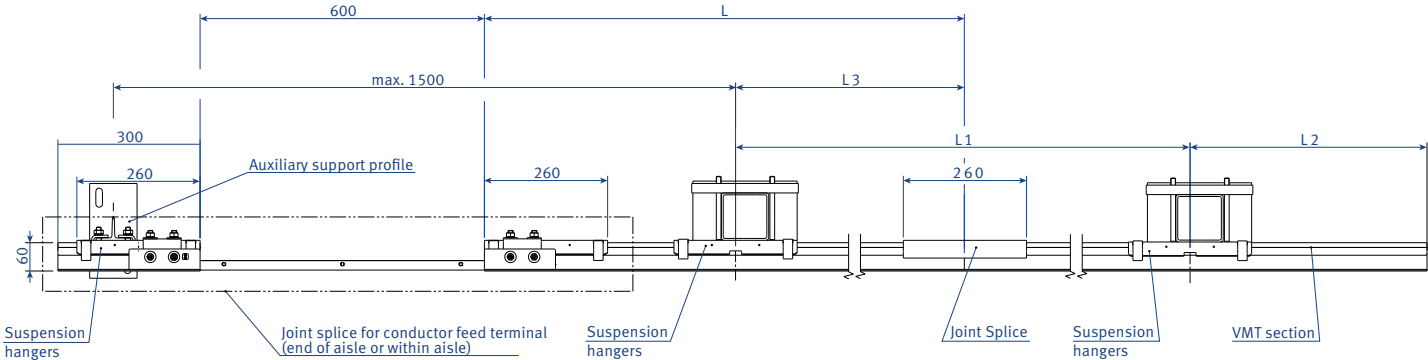
**Technical Data**

VMT Multi Support Profile: ..... galvanized steel  
 VMT Multi Support Profile length: ..... 6 m  
 Max. support distance (variable): ..... 3m - 3.5 m  
 Support hanger: ..... universal

**System Data<sup>(1)</sup>**

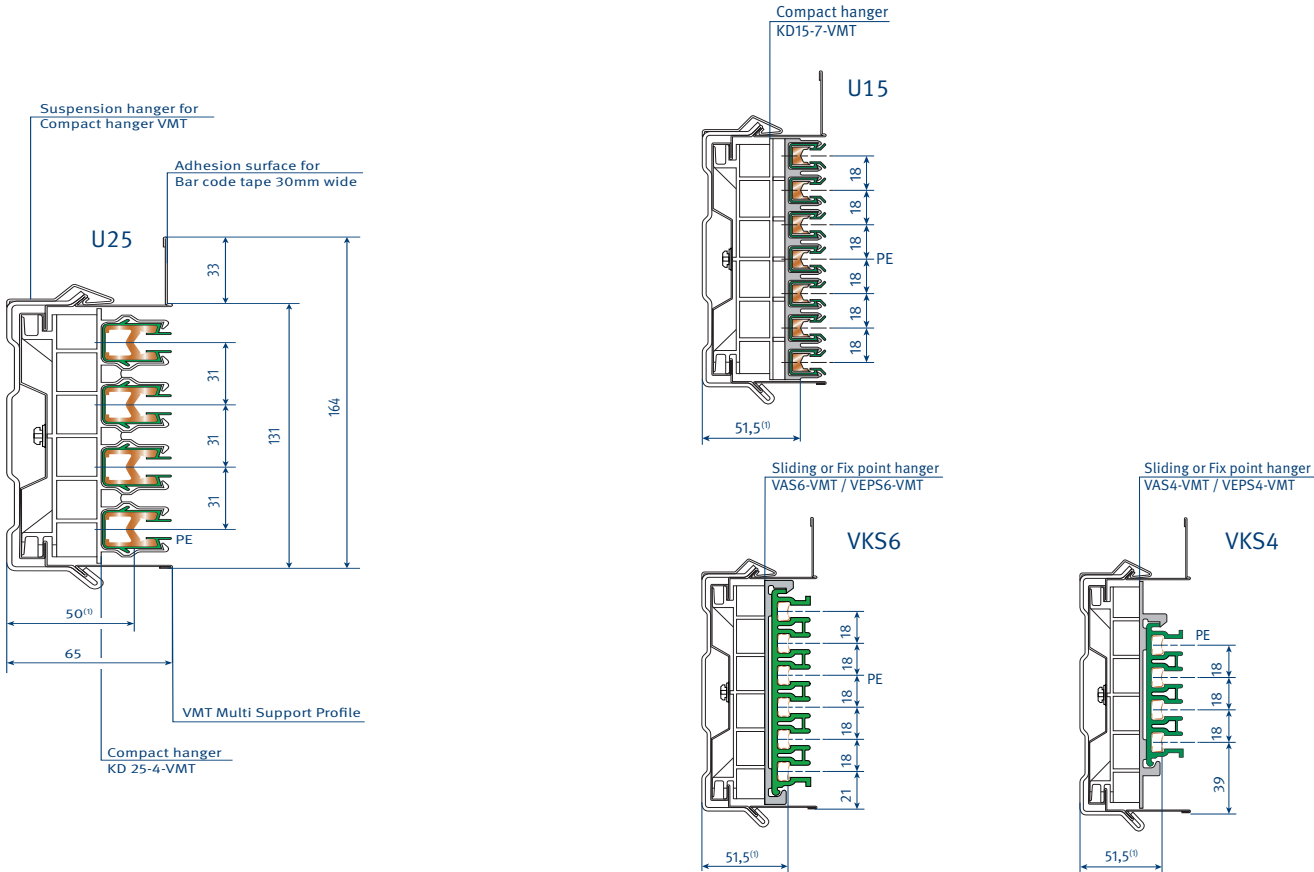
Number of conductors: ..... 4 to 7  
 Max. Voltage: ..... 690 V  
 Current: ..... 60 to 400 A  
 Duty cycle: ..... 100 %  
 Approvals: ..... UL  
 Max. operating speed: ..... 600 m/min  
 Temperature range: ..... -22°F +185°F

**System Layout**



L = Length of VMT Multi Support Profile  
 L1 = Support distance max 3m - 3.5 m (based on orientation of profile)

L2 = Overhang max 0.5m  
 L3 = Safety dimension for expansion min. 0.35 m



<sup>1</sup> Based on conductor system specified

## VMT Order Numbers



### 6m Profile

Type	Description	Weight kg (lb)	Order No.
VMT-6000	VAHLE Multi Support Profile, 6 m long	12.336 (28)	171 546



### Joint Clamp

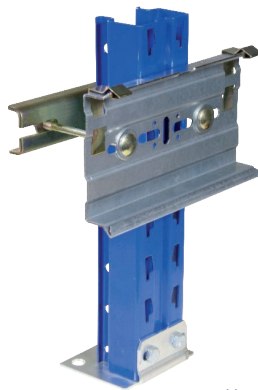
Type	Description	Weight kg (lb)	Order No.
KV-VMT	Clamping joint splice	.845 (2)	171 536

## Profile Hangers

### Clamping hangers



AH-VMT-SPW

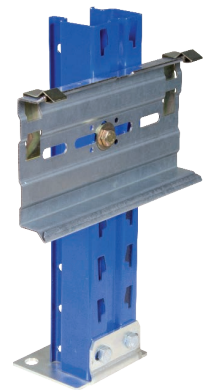


AH-VMT 100-125<sup>(1)</sup>

### Bolted hangers



AH-VMT-BS

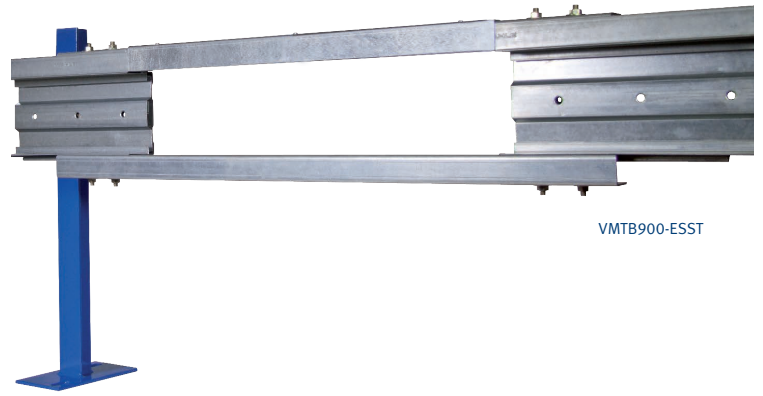


AH-VMT-S

Type	Description	Weight kg (lb)	Order No.
AH-VMT -SPW	Clamping Style - Max. 10 mm	.980 (2)	171 539
AH-VMT 100-115	Clamping Style - Max. 100–115mm <sup>1</sup>	1.450 (3)	171 537
AH-VMT 110-125	Clamping Style - Max. 110–125mm <sup>1</sup>	1.450 (3)	171 538
AH-VMT-BS	Bolted Style	.850 (2)	171 540
AH-VMT-S	Bolted Style - Single Bolt	.850 (2)	171 547

(1) Additional clamping dimensions available per request

## VMT Order Numbers Cont.



VMTB900-ESST

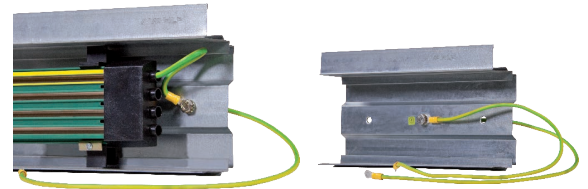
### Joint Splice for feed\*

\*Must be used at each feed location

Type	Description	Weight kg (lb)	Order No.
VMTB900-ESST	Connection for in-line feed	10.500 (24)	171 548
VMTB900-ESAE	Connection for end feed	11.100 (25)	171 549

### Potential Equalization

(Grounding)



VSPA-VMT-200-VKS4

VSPA-VMT-200-VKS4 (rear view)

Type	Description	Weight kg (lb)	Order No.
VSPA-VMT-600	Connection set U15   U25	.300 (.5)	171 563
VSPA-VMT-200-VKS4-R	Connection set VKS4 (r.h. side)	.443 (1)	171 564
VSPA-VMT-200-VKS4-L	Connection set VKS4 (l.h. side)	.443 (1)	171566
VSPA-VMT-200-VKS5+6-R	Connection set VKS5   VKS6 (r.h. side)	.457 (1)	171 565
VSPA-VMT-200-VKS5+6-L	Connection set VKS5   VKS6 (l.h. side)	.457 (1)	171 567



Cutting guide



(Cutting guide with profile section)



Installation pliers

### Installation Tools

Type	Description	Weight kg (lb)	Order No.
SVU-VMT	Cutting guide (for short lengths)	2.570 (6)	171 561
MZ-VMT	Installation pliers for Joint clamps	.700 (2)	171 533

## VAHLE Conductor Systems for VMT

VAHLE VMT is compatible with multiple VAHLE conductor systems. Each conductor type is listed below. Please reference the corresponding catalogs for order numbers and technical data.

Type	Conductor Material	# of Conductors	Standard Length
Insulated Conductors U15C	Copper	4-7 Poles	6 m
Insulated Conductors U25 AE	Aluminum-Stainless	4 Poles	6 m
Insulated Conductors U25 C	Copper	4 Poles	6 m
Multi-Enclosed VKS 4	Copper	4 Poles	6 m
Multi-Enclosed VKS 5	Copper	5 Poles	6 m
Multi-Enclosed VKS 6	Copper	6 Poles	6 m

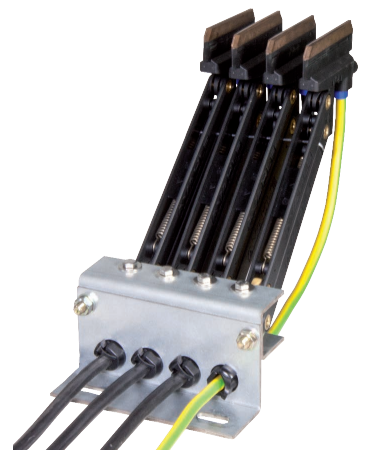
## Conductor System hangers for VMT

VAHLE VMT utilizes special twist in hangers for each conductor system. These hangers install quickly and do not require drilling or bolting.

Type	Conductor System	Poles	Order No.
KD15-7 VMT Compact Hanger	U15 C	1-7	171 524
KD25-4 VMT Compact Hanger	U25 C & U25 AE	1-4	171 523
VAS4 - Fixpoint Hanger	VKS 4	4	171 526
VEPS4 - Sliding Hanger	VKS 4	4	171 527
VAS6 - Sliding Hanger	VKS 5 & VKS 6	5-6	171 525
VEPS6 - Fixpoint Hanger	VKS 5 & VKS 6	5-6	171 528

## Compact Collector for U25 VMT

New design KEH 100 compact collector for U25 with VMT. Allows up 100A capacity, 200A capacity in tandem.

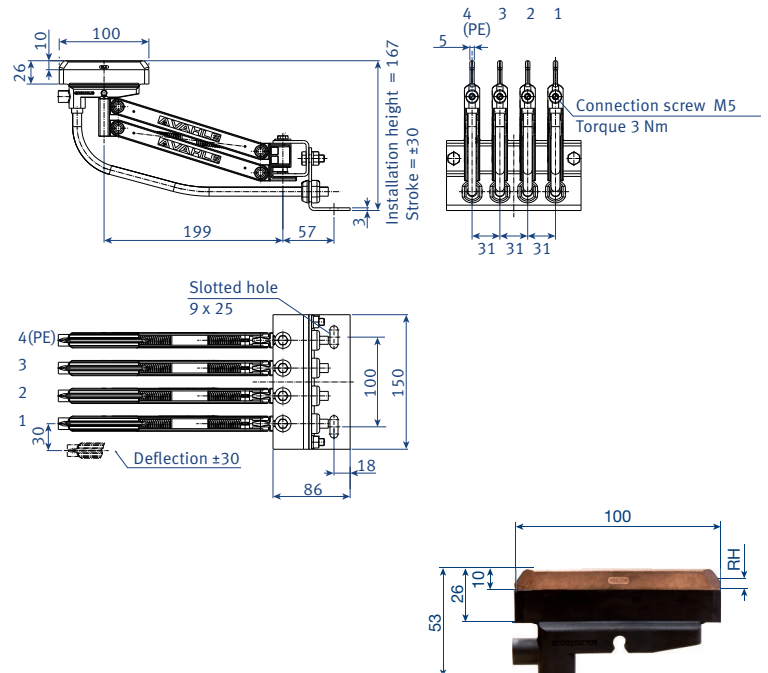


SA-KEH100-4-31HSAD-2,0-04-04

Type	Weight lbs	Number of poles	Base plate	Order-No.
SA-KEH100-4-31HSAD-2,0-04-04	7	4	PE at No. 4	171 529/00-D2
SA-KEH100-4-31HSAD-2,0-01-04	7	4	PE at No. 1	171 530/00-A2

## Technical Data for SA-KEH 100 for U 25 Conductors

Contact pressure approx: 12 N per collector brush  
 Number of poles: 4  
 Connection cable: 16 mm<sup>2</sup>, 2 m long  
 Max. current: 100 A  
 Deflection: ± 30 mm



## Replacement Carbon Brush

For KA-KEH 100 compact collector

Type	Weight kg (lb)	Thickness of brush mm	Replacement brush height mm	for collector	Order-No.
SK-KMK100/KEH-04	0.077 (2)	4	1.50	KEH 100	1000 0053

## Sample System Order\*

\* Based on 40M VMT system with 4 conductor U25/100 C.

\* For informative purposes only.

Type	Description	QTY	Order No.
VMT-6000	VAHLE Multi Support Profile, 6m long	7	171 546
KV-VMT	Clamping joint splice	6	171 523
AH-VMT-SPW	Clamping suspension hangers	5	171 539
VMTB900-ESST	Joint Splice for linefeed	1	171 548
VSPA-VMT-600	Potential equalization connection set	1	171 563
KD25-4 VMT	VMT Compact hanger for U25C - 4 pole	40 <sup>1</sup>	171 523
SVU-VMT	Cutting guide	1	171 561
MZ-VMT	Installation pliers	1	171 533
U25/100 C	6m Section - Phase	18	171 046
U25/100 C	4m Section - Phase	3	171 044
U25/100 C	6m Section - Ground	6	171 146
U25/100 C	4m Section - Ground	1	171 144
UV25	Joint splice	20 <sup>2</sup>	171 595
USK25 K4	Locating clamp (Stainless steel)	8	170 010
UE 25	Feed terminal	4 <sup>2</sup>	170 599
UK 25 - L	End Cap (loose)	8	170 013
KEH100 4-31 HS	Compact collector, 4 pole, PE on #4, 2m cable	1	171 529.2

<sup>1</sup> Based on 1m support distance. See U25 catalog for details.

<sup>2</sup> UV 25 Joint & UE 25 Feed terminal are interchangeable. See U25 catalog for details.

<b>1 Open Conductor Systems</b>	
Open conductor systems	1a
<b>2 Insulated Conductor Systems</b>	
U10	2a
U15, U25, U35	2c
U20, U30, U40	2d
<b>3 Compact Conductor Systems</b>	
VKS 10	3a
VKS - VKL	3b
<b>4 Enclosed Conductor Systems</b>	
KSL	4a
KBH	4b
MKH	4c
LSV - LSVG	4d
<b>5 Contactless Power Supply</b>	
Contactless power supply (CPS®)	5a
<b>6 Data Transmission</b>	
VAHLE Powercom®	6a
Slotted Microwave Guide (SMG)	6b
Mini-Slotted Microwave Guide (M-SMG)	6c
<b>7 Positioning Systems</b>	
VAHLE APOS®	7a
VAHLE APOS Optic	7b
<b>8 Festoon Systems</b>	
Light duty festoon systems - □ tracks & ◇ tracks	8a
Heavy duty festoon systems - ⊥ Beam tracks	8b
<b>9 Reels</b>	
Spring operated cable reels	9a
Motor powered cable reels	9b
<b>10 Port Technology</b>	
eRTG Solutions	10a
<b>11 Control Systems</b>	
VAHLE-DETO	11a
<b>12 Other</b>	
Battery charging contacts	12a
VMT	12b
BOK	12c
Specialty Components	Misc
Conductor Rings , Heavy Enclosed, Handling Systems, Cleaning Components, Polarity Protection	
<b>13 Services</b>	
Installation Services - On site supervision & training, pre-assembly, and commissioning	
Troubleshooting - Site inspection, maintenance, and repair	